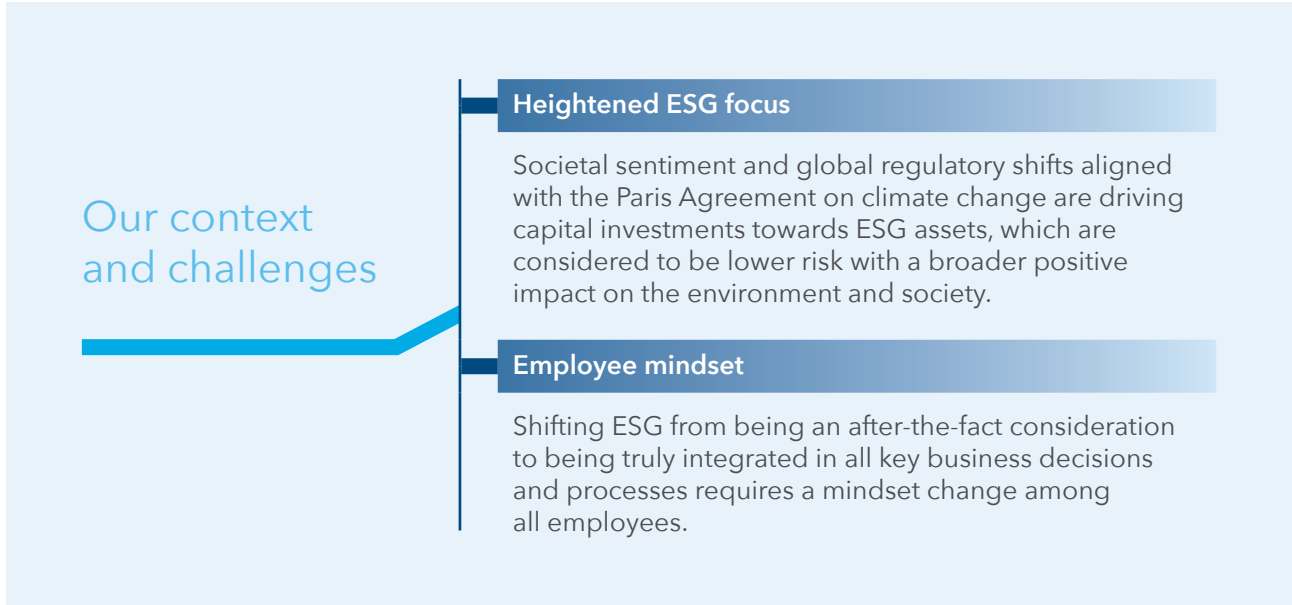


Focus area: Integrate ESG into governance and risk management processes



Our ESG framework

Our ESG framework is guided by the Deming Cycle and was co-created through management workshops during F2021, with a stated vision of zero harm to people and the environment. Our wider enterprise-wide risk management system explicitly incorporates ESG-related risk, adopting a risk averse approach to ESG.

